

Sustainer

It begins with light

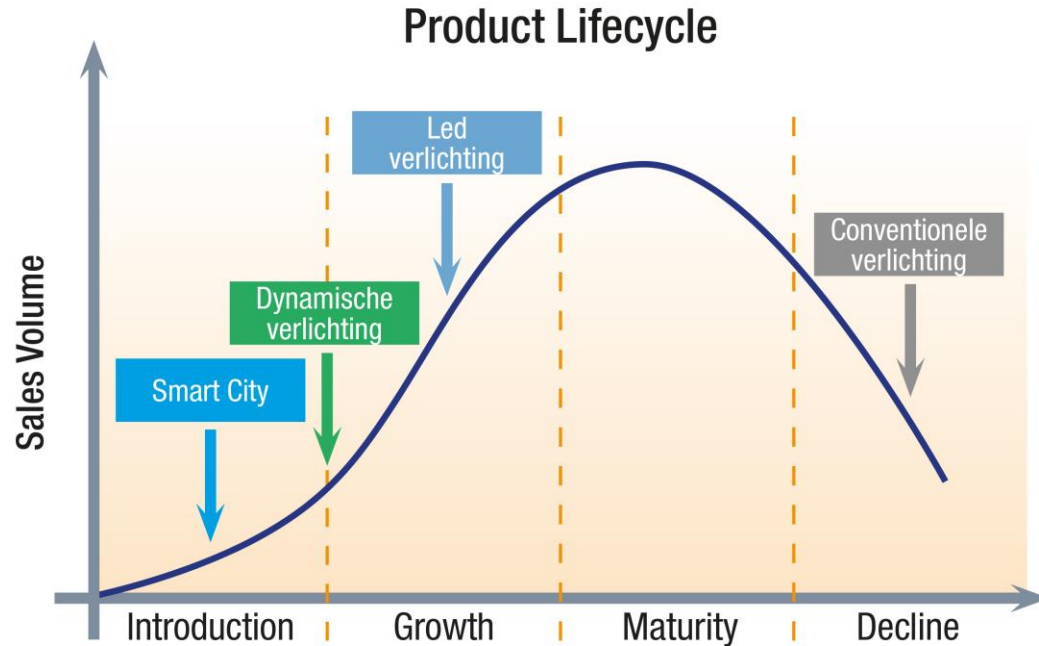
The public lighting network as the
central hub for the smart city

Innotep 2018
Niek de Jong



Sustainer 

Technology that enables us to manage the outdoors much smarter is maturing rapidly.



Smart city action clusters:

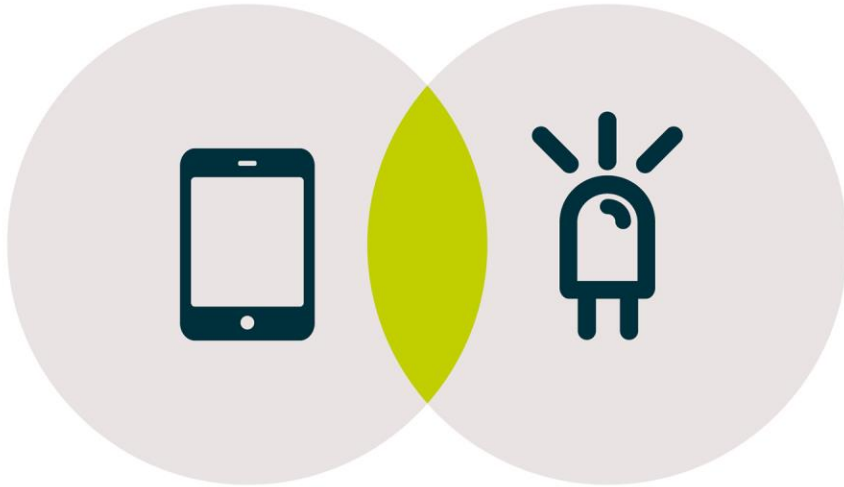
- Health, environment
- Public safety
- Transportation
- Public wifi / 5G

“Street furniture and especially Street Lighting is present everywhere and therefore will become the cornerstone of the Smart City Networks”

Niek de Jong – Sustainer CEO

“By 2020, 10% of smart cities will use streetlamps as the backbone for a smart city WAN”.

March 2017, Nagayoshi Nakano, research vice president at Gartner



Connecting two worlds

Sustainer combines the high-tech manufacturing skills of a former Indal / Philips luminaire factory, with the cutting-edge know-how of Dazzletek, a specialist in sensor technologies and intelligent control systems for public lighting.



Ready for the future

- Cassette system
- Connectivity
- Open architecture





Standard functionality



GPS



AMB Light



Compass



Energy use



Temp IN



RF Mesh



Accelerometer

Optional functionalities



Humidity



Camera



Counter



Noise



Gas



Motion



Temp OUT



CO₂



Wifi



Ethernet



2G/3G/4G

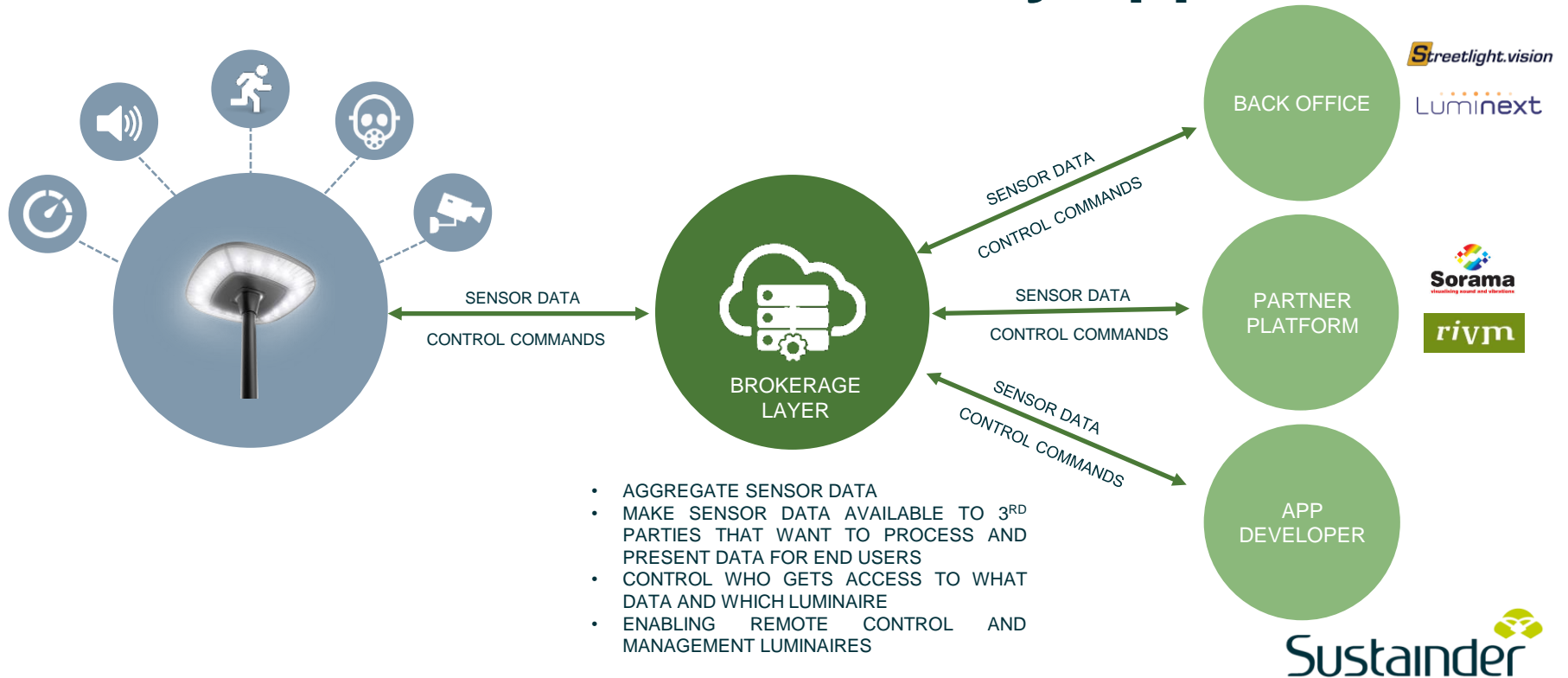


NB-IoT



Fibre

Our Brokerage Layer connects the smart city infrastructure to the smart city applications

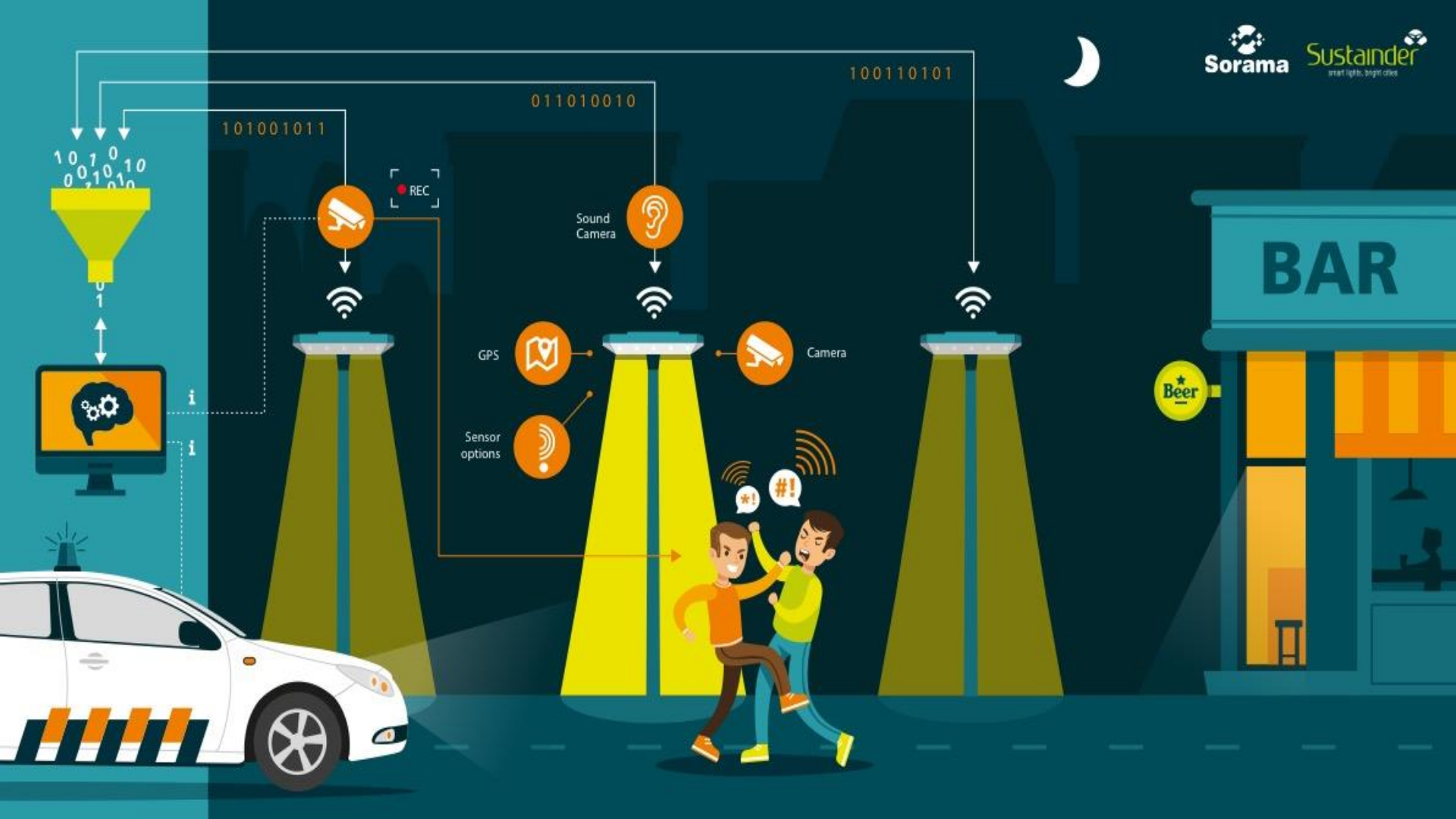


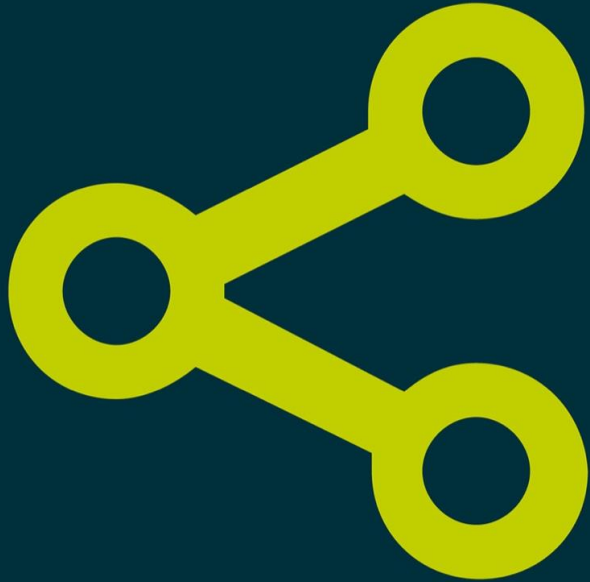
Applications



- monitoring type and location of sound on the street
- automatic detection of aggression, (car) alarms, gun shots/explosions and breaking glass.
- sensors and artificial intelligence provide insight into what is occurring outside.
- light aimed at where it is needed thanks to dynamic led-lighting.







Partner up

- Open architecture ensures ultimate flexibility
- Optimal result through collaboration



Sustainer 